

SKAARHOJ

VIDEOLINK™ INC.

Phone: 416-690-1690 or 1-800-567-8481

Email: info@videolink.ca

Website: www.videolink.ca



February 2018

XC Series	6
MC Series	9
Micro Series	12
Remotes	
C10 Remote	16
C15 Remote	17
C20 Remote	18
Pocket Controllers	
E21-TVS MII Pocket Controller	20
E21-SLD Pocket Controller	21
E21-KP01 Pocket Controller	22
E21-SSW Pocket Controller	23
E21-CMB6 MII Pocket Controller	24
C31 Pocket Controller	25
Desktop Controllers	
E201-M16 Desktop Controller	27
C201 Desktop Controller	28
Rack Controllers	
C90 MII Rack Controller	30
C90R Rack Controller	31
C90D Rack Controller	32
C90A Rack Controller	33
Camera Control	
RCP	35
RCP Mini	36
C25	37
ATEM CCU	38
ATEM CCU Lite	39
Link IO	
ETH-GPI Link	41
ETH-SDI Link	42
ETH-B4 Link	43
SDI-B4 Link	44
WIFI-B4 Link	45
SDI-GPI Link	46
ATEM Proxy	47
Tally Box System	48
Accessories	
ATEM GPI & Tally Interface Breakout Board	50

UniSketch OS

Think of SKAARHOJ broadcast controllers like modern computers; they come in form factors like desktop, notebook, tablet and yet they run the same operating system enabling individual use through installation of apps from online repositories. Likewise all variants of SKAARHOJ controllers run the UniSketch OS connected to a growing "app store" of broadcast device support.

UniSketch OS is the core system running on all of our UniSketch compatible controllers. In short this means functionality is not limited to a specific controller - they can all do the same with the apparent limitation different hardware interface components provides.

UniSketch OS goes hand in hand with our online repo, cores.skaarhoj.com. On this server we store UniSketch OS, the newest device cores and your unique controller configuration in a database. When you connect your controller to cores.skaarhoj.com, you receive a uniquely created firmware with exactly the features you asked for

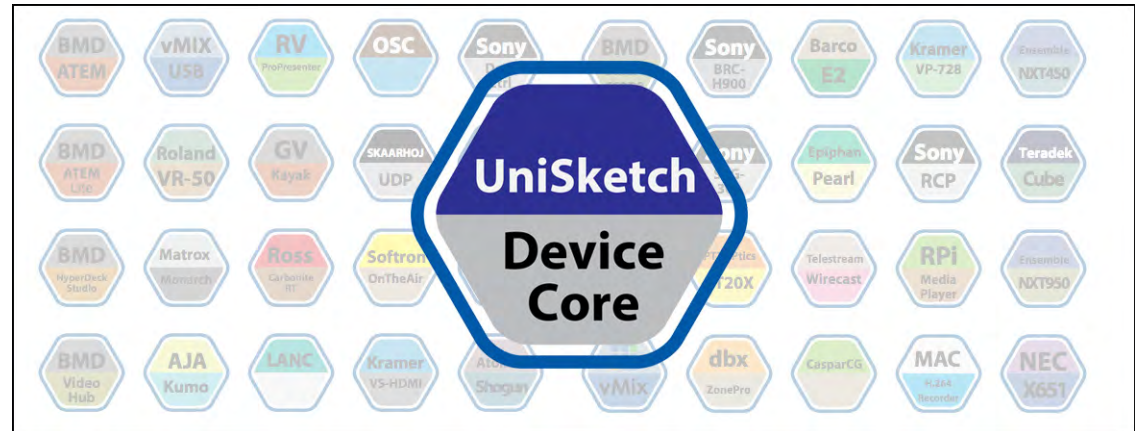


Note: UniSketch V2.x needs the SKAARDUINO Due platform to run.

The following controllers are not shipping with UniSketch:

- ETH-SDI Link (have two custom firmwares)
- SDI-B4 Link (run native firmware)
- WIFI-B4 Link (run native firmware)
- ETH-B4 Link (have multiple firmwares)
- ATEM Proxy

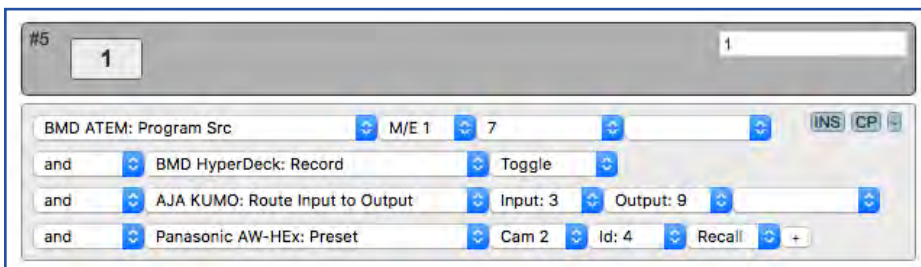
Device Cores



Growing App Store

We support many broadcast devices by the means of Device Cores and we encourage you to see the latest updates on www.skaarhoj.com/support/device-cores/ You might just find what you are looking for! If not we invite you to contact us with suggestions - we need real world users to inform our development decisions.

A Device Core is much like an app for your smart phone - in this case you install the Device Core on your UniSketch OS based controller to get control access for your particular broadcast device.



Example of multiple Device Core control from a single button

ATEM/BMD Compatibility

Stand Alone Controller

You do **NOT** need a PC/Mac running the ATEM Software control panel for using SKAARHOJ controllers - they are independent units. But you can, and the changes made in either the SKAARHOJ controller or in the control panel will correlate with the other unit.

ATEM Compatibility

Our controllers are compatible with all of Blackmagic Design ATEM switchers including their 4K switcher lineup. There are no limitations, so even smaller controllers such as the E21-TVS MII can be connected to a ATEM 2 M/E Broadcast Studio 4K. And control of both 1ME and 2ME is possible.

Multiple SKAARHOJ controllers can be connected to the same ATEM switcher and a single SKAARHOJ controller can be connected to multiple ATEM switchers. Some limitations in number of clients do apply. Please contact us, to get the latest update.

Blackmagic Design

Besides the ATEM video switcher series from BMD our products allows control of:

- SmartScope Duo 4K
- HyperDeck Series
- SmartView 4K
- Video Hub Series
- Studio Cameras
- Micro Studio Camera 4K
- URSA Mini + URSA Mini Pro
- MultiView16

Multiple Peripherals

One of our great advantages is the possibility to communicate with multiple peripherals simultaneously. Our UniSketch based controllers allows connection to a maximum number of 8 devices at the same time.

See cores.skaarhoj.com for the latest updates.

More Information

For more information we refer to our website www.SKAARHOJ.com and the manual at www.skaarhoj.com/support/manual/

XC Series

XC Series



XC1



XC2



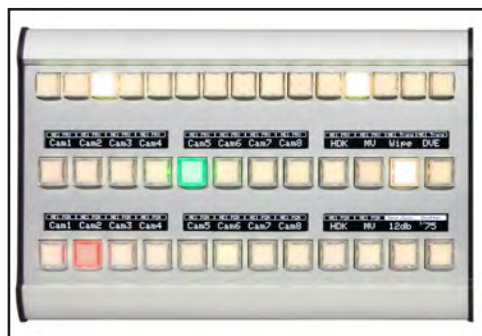
XC3



XC4



XC5



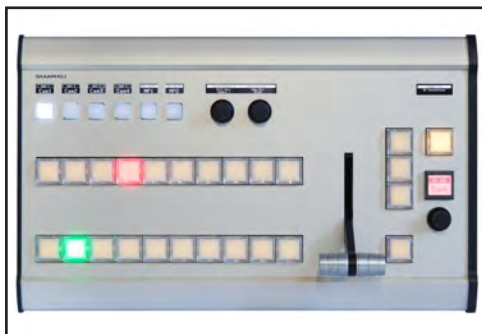
XC6



XC7



XC8



XC13

XC Series

Connections	Ethernet for direct connection or via network
Power Requirement	12V External power supply or PoE
Weight	See website
What's Included	XC Controller + PSU + network cable + programming cable
Physical Specifications	See website

- Check website for functionality and options
- Option: Power over Ethernet (PoE)
- UniSketch OS based controller

Model	Options	Color	Standard Price (MSRP)
XC1, Master		Silver	\$ 999
XC2, Master			\$ 1.899
XC2, Module			\$ 1.549
XC3, Master			\$ 2.799
XC3, Module			\$ 2.449
XC4, Master			\$ 1.849
XC4, Module			\$ 1.499
XC5, Master			\$ 1.449
XC5, Module			\$ 1.099
XC6, Master			\$ 2.649
XC6, Module			\$ 2.299
XC7, Master			\$ 1.249
XC7, Module			\$ 899
XC8, Master			\$ 2.299
XC8, Module			\$ 1.949
XC13, Master			\$ 2.899
XC13, Module			\$ 2.549
Option: PoE	PoE		\$ 70

MC Series

MC Series



MC1



MC2



MC3



MC4



MC5



MC6



MC7



MC8



MC9



MC10



MC11



MC12



MC13



MC14

MC Series

Connections	Ethernet for direct connection or via network
Power Requirement	12V External power supply or PoE
Weight	See website
What's Included	MC Controller + PSU + network cable + programming cable
Physical Specifications	See website

- Check website for functionality and options
- Option: Power over Ethernet (PoE)
- UniSketch OS based controller

Model	Options	Color	Standard Price (MSRP)
MC1, Master		Blue	\$ 699
MC2, Master			\$ 1.699
MC2, Module			\$ 1.449
MC3, Master			\$ 1.699
MC3, Module			\$ 1.449
MC4, Master			\$ 1.349
MC4, Module			\$ 1.099
MC5, Master			\$ 1.049
MC5, Module			\$ 799
MC6, Master			\$ 1.049
MC6, Module			\$ 799
MC7, Master			\$ 1.599
MC7, Module			\$ 1.349
MC8, Master			\$ 1.149
MC8, Module			\$ 899
MC9, Module			\$ 549
MC10, Master			\$ 1.399
MC10, Module			\$ 1.149
MC11, Master			\$ 1.199
MC11, Module			\$ 949
MC12, Module			\$ 749
MC13, Master			\$ 1.199
MC13, Module			\$ 949
MC14, Module			\$ 849
Option: PoE	PoE		\$ 70

Micro Controllers

Micro Series



Micro Smart V



Micro Smart H



Micro Smart E



Micro KP01



Micro B16



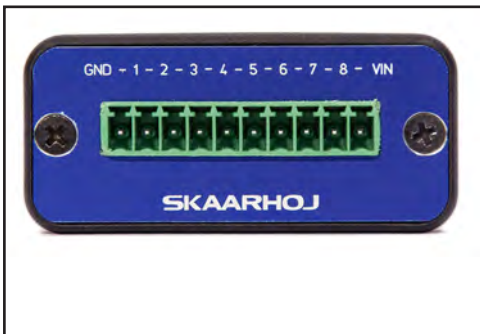
Micro Monitor



Micro Levels



Micro Audio



Micro GPIO



Micro Tally

Micro Series



Connections	Ethernet for direct connection or via network
Power Requirement	12V External power supply or PoE
Weight	110g
What's Included	Micro Controller + PSU + network cable + programming cable
Physical Specifications	9.2 x 5.7 x 2.6 cm (enclosure size)

- Check website for functionality and options
- Microprocessor included in the enclosure
- Option: Power over Ethernet (PoE)
- UniSketch OS based controller

Model	Options	Color	Standard Price (MSRP)
Micro Smart V		Blue	\$ 749
Micro Smart H			\$ 749
Micro Smart E			\$ 649
Micro KP01			\$ 549
Micro BI16			\$ 499
Micro Monitor			\$ 449
Micro Levels			\$ 499
Micro Audio			\$ 499
Micro GPIO			\$ 549
Micro Tally			\$ 399
	PoE		\$ 70

Remotes

C10 Remote



Mounting Plate

Connections	Ethernet for direct connection or via network
Power Requirement	12V External power supply or PoE
Weight	300 g
What's Included	C10 Remote + PSU + network cable + programming cable
Physical Specifications	15.5 x 5 x 3 cm (without mounting plate)

- Perfect for mounting at tripod
- Very durable
- 8 Broadcast quality 17.4mm buttons
- Microprocessor included in the body of the remote
- Mounting Plate (2 x 5mm holes and 1/4"-20 thread. Fits camera mounting systems)
- Power over Ethernet (PoE) included
- UniSketch OS based controller

Model	Options	Color	Standard Price (MSRP)
C10 Remote		Blue	\$ 1.499

C15 Remote



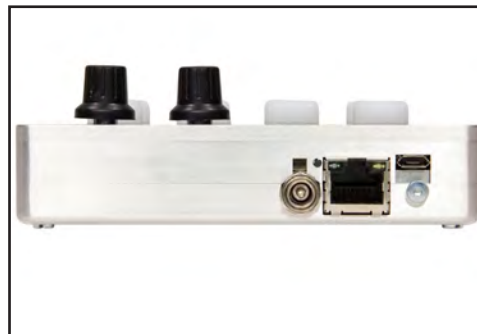
Mounting Plate

Connections	Ethernet for direct connection or via network
Power Requirement	12V External power supply or PoE
Weight	340 g
What's Included	C15 Remote + PSU + network cable + programming cable
Physical Specifications	20 x 5 x 3 cm (without mounting plate)

- Perfect for mounting at tripod
- Very durable
- 6 Broadcast quality RGB 17.4mm buttons
- 2 SmartSwitch Buttons
- Joystick
- Microprocessor included in the body of the remote
- Mounting Plate (2 x 5mm holes and 1/4"-20 thread. Fits camera mounting systems)
- Compatible with Panasonic PTZ Cameras
- Power over Ethernet (PoE) included
- UniSketch OS based controller

Model	Options	Color	Standard Price (MSRP)
C15 Remote		Blue	\$ 1.899

C20 Remote



Mounting Plate

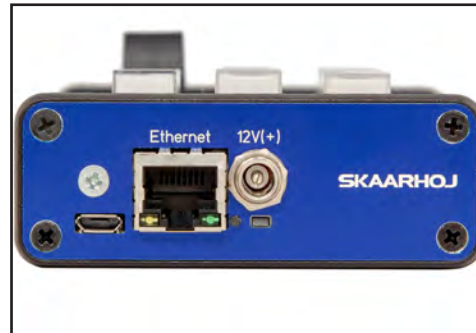
Connections	Ethernet for direct connection or via network
Power Requirement	12V External power supply or PoE
Weight	470 g
What's Included	C20 Remote + PSU + network cable + programming cable
Physical Specifications	11.5 x 13 x 2.4 cm (without mounting plate)

- Perfect for mounting at tripod
- Very durable
- 8 RGB buttons with OLED displays
- Two encoders with OLED displays
- Microprocessor included in the body of the remote
- Mounting Plate (2 x 5mm holes and 1/4"-20 thread. Fits camera mounting systems)
- Power over Ethernet (PoE) included
- UniSketch OS based controller

Model	Options	Color	Standard Price (MSRP)
C20 Remote		Blue	\$ 1.399

Pocket Controllers

E21-TVS MII Pocket Controller



Option: GPIO

Connections	Ethernet for direct connection or via network. DB25 connector for GPI option
Power Requirement	12V External power supply or PoE
Weight	290 g
What's Included	E21-TVS MII + PSU + network cable + programming cable
Physical Specifications	12.7 x 8 x 2.9 cm (enclosure size)

- Perfect fit for ATEM Television Studio
- 16 red, green or ambient broadcast quality buttons (12mm)
- Slider
- Option: GPIO. 2x8 channel BlackMagic Design compatible DB-25 connector for Tally output and GPI
- Option: Power over Ethernet (PoE)
- UniSketch OS based controller

Model	Options	Color	Standard Price (MSRP)
E21-TVS MII	- GPI PoE	Blue	\$ 599 \$ 350 \$ 70

E21-SLD Pocket Controller



Connections	Ethernet for direct connection or via network
Power Requirement	12V External power supply or PoE
Weight	280 g
What's Included	E21-SLD + PSU + network cable + programming cable
Physical Specifications	12.7 x 8 x 2.8 cm

- 8 Broadcast quality 15 mm buttons
- Display for system state information
- Slider
- Option: Power over Ethernet (PoE)
- UniSketch OS based controller

Model	Options	Color	Standard Price (MSRP)
E21-SLD	-	Blue	\$ 799
E21-SLD w. PoE			\$ 869

E21-KP01 Pocket Controller



Connections	Ethernet for direct connection or via network
Power Requirement	12V External power supply or PoE
Weight	270 g
What's Included	E21-KP01 + PSU + network cable + programming cable
Physical Specifications	12.7 x 8 x 2.8 cm

- 10 Broadcast quality 15 mm buttons
- Display for system state information
- Slider
- Option: Power over Ethernet (PoE)
- UniSketch OS based controller

Model	Options	Color	Standard Price (MSRP)
E21-KP01	-	Blue	\$ 799
E21-KP01 w. PoE	-	Blue	\$ 869

E21-SSW Pocket Controller

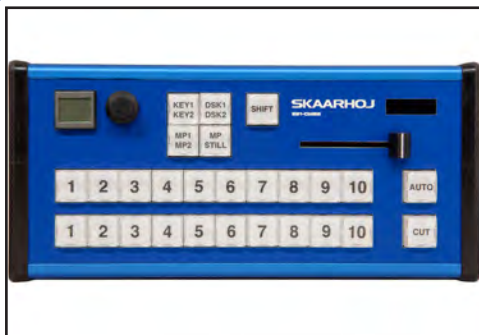


Connections	Ethernet for direct connection or via network
Power Requirement	12V External power supply or PoE
Weight	280 g
What's Included	E21-SSW + PSU + network cable + programming cable
Physical Specifications	12.7 x 8 x 2.9 cm

- 7 Broadcast quality 15 mm buttons
- Display for system state information
- SmartSwitch Menu
- Option: Power over Ethernet (PoE)
- UniSketch OS based controller

Model	Options	Color	Standard Price (MSRP)
E21-SSW	-	Blue	\$ 849
E21-SSW w. PoE	-	Blue	\$ 919

E21-CMB6 MII Desktop Controller



Connections	Ethernet for direct connection or via network
Power Requirement	12V External power supply or PoE
Weight	610 g
What's Included	E21-CMB6 MII + PSU + network cable + programming cable
Physical Specifications	23 x 10.7 x 3.5 cm

- 27 Broadcast quality 15 mm buttons
- Display for system state information
- Slider
- SmartSwitch Menu
- Option: Power over Ethernet (PoE)
- UniSketch OS based controller

Model	Options	Color	Standard Price (MSRP)
E21-CMB6 MII	-	Blue	\$ 1.399
E21-CMB6 MII w. PoE	-	Blue	\$ 1.469

C31 Pocket Controller



Connections	Ethernet for direct connection or via network
Power Requirement	12V External power supply or PoE
Weight	C31 w. T-bar: 710 g
What's Included	C31 + PSU + network cable + programming cable
Physical Specifications	14.7 x 10.8 x 6 cm (enclosure size)

- 8 Broadcast quality 15 mm buttons
- T-bar
- Option: Slider
- Option: Power over Ethernet (PoE)
- UniSketch OS based controller

Model	Options	Color	Standard Price (MSRP)
C31	-	Blue	\$ 1.849
C31 w. Slider	Slider		\$ 1.499
	PoE		\$ 70

Desktop Controllers

E201-M16 Desktop Controller

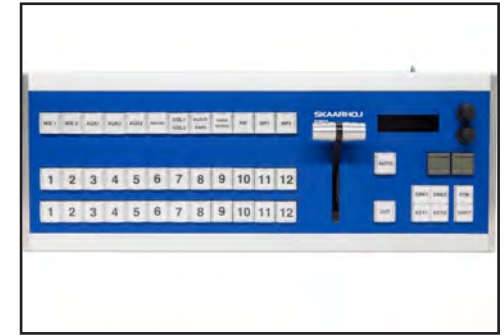


Connections	Ethernet for direct connection or via network
Power Requirement	12V External power supply or PoE
Weight	1400 g
What's Included	E201-M16 + PSU + network cable + programming cable
Physical Specifications	34.5 x 18 x 7.5 cm

- 29 Broadcast quality 17.4 mm buttons
- Display & Menu
- T-bar
- Option: Power over Ethernet (PoE)
- UniSketch OS based controller

Model	Options	Color	Standard Price (MSRP)
E201-M16	-	Silver	\$ 2.849
E201-M16 w. PoE	-	Silver	\$ 2.919

C201 Desktop Controller



C201 w. 12 buttons

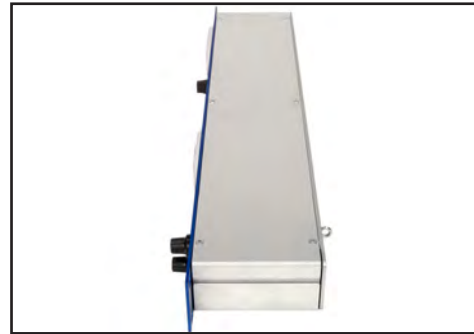
Connections	Ethernet for direct connection or via network
Power Requirement	12V External power supply
Weight	C201 w. 10 buttons 1975g C201 w. 12 buttons 2130g
What's Included	C201 + PSU + network cable + programming cable
Physical Specifications	C201 w. 10 buttons 36 x 16 x 9 (enclosure size) C201 w. 12 buttons 39.4 x 16 x 9 (enclosure size) 32 x 15 x 8.4 cm (enclosure size)

- 32/38 Broadcast quality 17.4 mm buttons
- 6 Broadcast quality 15 mm buttons
- Display & Menu
- Transparent button caps for custom labels
- Bolt-eye for stripping power cable
- T-bar
- 2 x SmartSwitches with 64x32 graphical displays
- Display & Menu with 3x16 chars backlit display (white on black) + 2 rotary menu controls
- Option: Power over Ethernet (PoE)
- UniSketch OS based controller

Model	Options	Color	Standard Price (MSRP)
C201 w. 10 buttons	-	Blue	\$ 3.499
C201 w. 12 buttons	- PoE		\$ 3.699 \$ 70

Rack Controllers

C90 MII Rack Controller



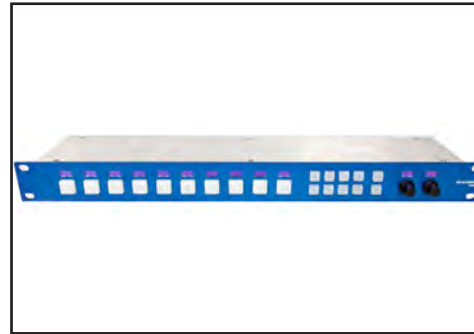
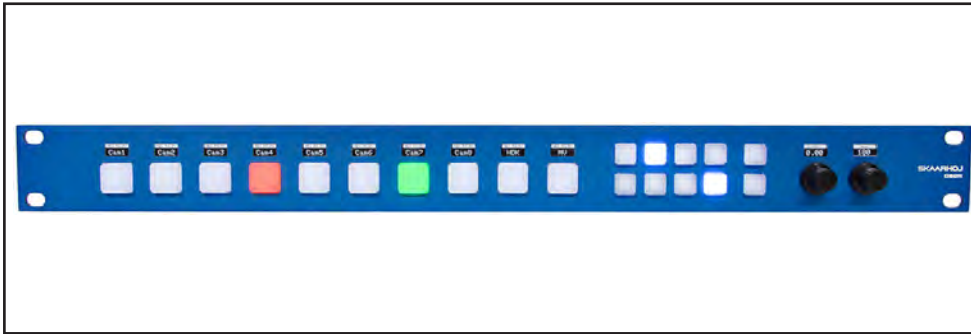
Option: GPI

Connections	Ethernet for direct connection or via network. DB25 connector for GPI option
Power Requirement	12V External power supply or PoE
Weight	875g
What's Included	C90 MII + PSU + network cable + programming cable
Physical Specifications	1U high, full rack width, 9 cm deep

- 15 Broadcast quality 15 mm buttons
- Slider
- Display & Menu
- Power over Ethernet (PoE) included
- Option: GPIO. 2x8 channel BlackMagic Design compatible DB-25 connector for Tally output and GPI
- UniSketch OS based controller

Model	Options	Color	Standard Price (MSRP)
C90 MII	-	Blue	\$ 1.199
C90 MII + GPI Option	GPI	Blue	\$ 1.549

C90R Rack Controller



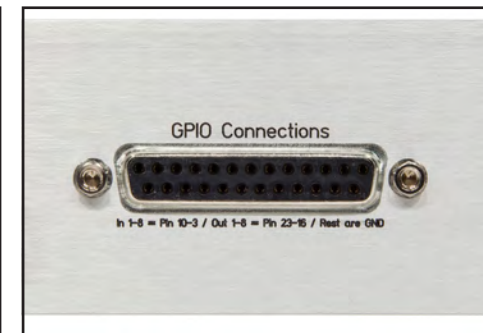
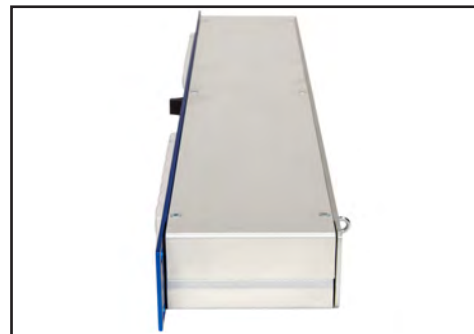
Option: GPI

Connections	Ethernet for direct connection or via network. DB25 connector for GPI option
Power Requirement	12V External power supply or PoE
Weight	795g
What's Included	C90R + PSU + network cable + programming cable
Physical Specifications	1U high, full rack width, 9 cm deep

- 10 large RGB buttons with OLED displays
- 10 RGB utility buttons
- Two encoders with OLED displays
- Power over Ethernet (PoE) included
- Option: GPIO. 2x8 channel BlackMagic Design compatible DB-25 connector for Tally output and GPI
- UniSketch OS based controller

Model	Options	Color	Standard Price (MSRP)
C90R	-	Blue	\$ 1.399
C90R + GPI Option	GPI	Blue	\$ 1.749

C90D Rack Controller



Option: GPI

Connections	Ethernet for direct connection. DB25 connector for GPI option
Power Requirement	12V External power supply or PoE
Weight	900g
What's Included	C90D + PSU + network cable + programming cable
Physical Specifications	1U high, full rack width, 9 cm deep

- 32 Broadcast quality 15 mm buttons
- Slider
- Power over Ethernet (PoE) included
- Option: GPIO. 2x8 channel BlackMagic Design compatible DB-25 connector for Tally output and GPI
- UniSketch OS based controller

Model	Options	Color	Standard Price (MSRP)
C90D	-	Blue	\$ 1.549
C90D + GPI Option	GPI		\$ 1.899

C90A Rack Controller



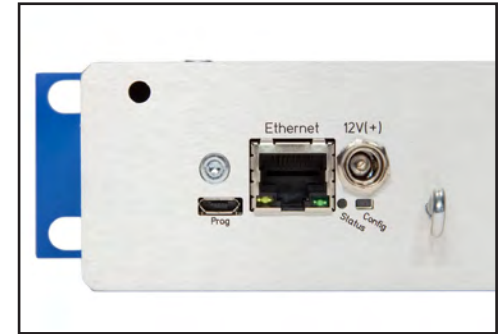
6 ch. audio control w. on/off + AFV



Video control



Aud + vid control in a single rack unit



Connections on the back

Connections	Ethernet for direct connection or via network
Power Requirement	12V External power supply
Weight	880g
What's Included	C90A + PSU + network cable + programming cable
Physical Specifications	1U high, full rack width, 9 cm deep

- 13 Broadcast quality 15 mm buttons
- Slider
- 6 audio knob input controls
- "On" button for each audio input
- AFV button for each video-input channel
- Peak indicator for each audio channel
- Master volume control
- VU meter
- 2 audio user buttons
- UniSketch OS based controller

Model	Options	Color	Standard Price (MSRP)
C90A	-	Blue	\$ 1.999

Camera Control



Connections	Ethernet for direct connection between ATEM, or via network. SDI connections for direct communication with cameras
Power Requirement	12V External power supply
Weight	1160 g
What's Included	RCP + BMD Arduino Shield + PSU + network cable + programming cable
Physical Specifications	10.2 x 35.5 x 13.5 cm (top of joystick)

- CCU joystick with master black wheel and push button on top
- 10 rotary encoders
- 16 x 12 mm buttons for system control
- 3 x 12 mm bi-color buttons for InActive, Relative, Auto Iris
- 1 x 17.4 mm button for preview toggle
- 256x64 pixel crisp OLED display for overview of encoder settings
- ID indication with large 8 character camera ID display
- Miniature high contrast 128x32 OLED display, white on black
- Same form factor as the Sony RCP-1500 series
- Works with URSA Mini (+ Pro) and Studio Camera Series
- Option: Multi Turn Dial for Iris control instead of Joystick
-
- Controls camera via ATEM or via BlackMagic Arduino Shield
- UniSketch OS based controller

Model	Options	Color	Standard Price (MSRP)
RCP	-	Blue	\$ 2.499
RCP + Multi Turn Dial Option	Multi Turn Dial		\$ 2.499

RCP Mini



Connections	Ethernet for direct connection between ATEM, or via network. SDI connections for direct communication with cameras
Power Requirement	12V External power supply
Weight	770 g
What's Included	RCP Mini + BMD Arduino Shield + PSU + network cable + programming cable
Physical Specifications	6.8 x 24.4 x 7.4 cm (enclosure size) - top joystick 14 cm

- CCU joystick with master black wheel and push button on top
- 4 rotary encoders
- 7 x RGB buttons for system control
- 3 x buttons for InActive, Relative, Auto Iris
- 1 x button for preview toggle
- ID indication with large 8 character camera ID display
- Miniature high contrast 128x32 OLED display, white on black
- Same form factor as the Sony RCP-1000 series
- Works with URSA Mini (+ Pro) and Studio Camera Series
- Option: Multi Turn Dial for Iris control instead of Joystick
-
- Controls camera via ATEM or via BlackMagic Arduino Shield
- UniSketch OS based controller

Model	Options	Color	Standard Price (MSRP)
RCP Mini	-	Blue	\$ 2.099
RCP Mini + Multi Turn Dial Option	Multi Turn Dial		\$ 2.099



Connections	Ethernet for direct connection between ATEM, or via network. SDI connections for direct communication with cameras
Power Requirement	12V External power supply
Weight	370 g
What's Included	C25 + BMD Arduino Shield + PSU + network cable + programming cable
Physical Specifications	16.7 x 8 x 2.9 cm

- 4 RGB Buttons
- 5 rotary encoders with OLED display
- Works with URSA Mini (+ Pro) and Studio Camera Series
-
- Controls camera via ATEM or via BlackMagic Arduino Shield
- UniSketch OS based controller

Model	Options	Color	Standard Price (MSRP)
C25	-	Blue	\$ 1.299

ATEM CCU



Option: 3G-SDI Arduino Shield

Connections	Ethernet for direct connection between ATEM, or via network
Power Requirement	12V External power supply
Weight	1100 g
What's Included	CCU + PSU + network cable + programming cable
Physical Specifications	29.5 x 18 x 7.5 cm (enclosure size)

- 8 Broadcast quality 17.4 mm buttons for camera selection
- 35mm multi turn dial (aluminium knob) control for Iris
- 24mm multi turn dial (aluminium knob) control for Master Black
- 2 miniature high contrast 128x32 OLED Displays, white on black.
- 4 RGB backlit 64x32 pixel displays
- 5 rotary encoders
- OLED Rocker Switch for system menu control (96x64 pixels)
- Option: BlackMagic 3G-SDI Arduino Shield
- UniSketch OS based controller

Model	Options	Color	Standard Price (MSRP)
ATEM CCU	-	Silver	\$ 2.799
ATEM CCU + BlackMagic 3G-SDI Arduino Shield Option	BlackMagic 3G-SDI Arduino Shield		\$ 2.999

ATEM CCU Lite



Connections	Ethernet for direct connection between ATEM, or via network
Power Requirement	12V External power supply
Weight	1140 g
What's Included	CCU Lite + PSU + network cable + programming cable
Physical Specifications	29.5 x 18 x 7.5 cm (enclosure size)

- 4 Broadcast quality 17.4 mm buttons for camera selection
- 35mm multi turn dial (aluminium knob) control for Iris
- 24mm multi turn dial (aluminium knob) control for Master Black
- UniSketch OS based controller

Model	Options	Color	Standard Price (MSRP)
ATEM CCU Lite		Silver	\$ 1.449

Link 10

ETH-GPI Link



ETH-GPI Link



ETH-GPI Link



Option: GPI (extra GPI module)



Option: GPI (extra GPI module)

Connections	Ethernet for direct connection or via network. DB25 connector
Power Requirement	12V External power supply
Weight	ETH-GPI Link 215 g ETH-GPI Link w. GPI option 300g
What's Included	ETH-GPI Link + PSU + network cable + programming cable
Physical Specifications	ETH-GPI Link 12,7 x 8 x 2.9 cm (enclosure size) ETH-GPI Link w. GPI option 12.7 x 8 x 4.9 cm (enclosure size)

- ETH-GPI Link: 8 GPI Input
- ETH-GPI Link: 8 GPI Output
- ETH-GPI Link w. GPI option: 16 GPI Input (via 2 x DB25 connector)
- ETH-GPI Link w. GPI option: 16 GPI Output (via 2 x DB25 connector)
- DB25 connector configuration is similar to the BMD GPI & Tally Interface
- UniSketch OS based controller
-
- Get our "ATEM GPI & Tally Interface Breakout Board" if you want a breakout board for the DB25 connector for the ETH-GPI Link

Model	Options	Color	Standard Price (MSRP)
ETH-GPI Link	8 GPI	Blue	\$ 499
ETH-GPI Link + GPI Option	16 GPI		\$ 849

ETH-SDI Link



Connections	Ethernet for direct connection or via network. 3G SDI IN/OUT
Power Requirement	12V External power supply
Weight	245g
What's Included	ETH-SDI Link + PSU + network cable + programming cable
Physical Specifications	12.7 x 8 x 2.9 cm (enclosure size)

- Merge multiple RCP IP control signals onto a single SDI wire
- Various firmware options - check website for functionality

Model	Options	Color	Standard Price (MSRP)
ETH-SDI Link	-	Blue	\$ 399

ETH-B4 Link



Connections	Ethernet via network to ATEM Switcher + CCU/CCU Lite
Power Requirement	12V External power supply
Weight	80 g
What's Included	ETH-B4 Link + PSU + network cable + programming cable
Physical Specifications	5.2 x 5.6 x 2.5 cm (enclosure size)

- Control iris value on analog B4 lens
- Hirose 12-pin connector
- Preview/program tally information from small LED on both sides
- Set camera number via selector switch
- Preview tally from 3-pin phoenix connector: Ground, IO, 12V (VIN)
- Iris lens calibration feature, if default iris values do not provide sufficient range
- Tiny form factor

Model	Options	Color	Standard Price (MSRP)
1 x ETH-B4 Link		Blue	\$ 499
2 x ETH-B4 Link			\$ 999
3 x ETH-B4 Link			\$ 1.399
4 x ETH-B4 Link			\$ 1.899

SDI-B4 Link



Connections	3G SDI IN/OUT + Hirose 12-pin connector
Power Requirement	12V External power supply
Weight	260 g
What's Included	SDI-B4 Link + PSU
Physical Specifications	12.7 x 8 x 2.9 cm (enclosure size)

- Control iris on analog B4 lens
- Hirose 12-pin connector
- Completely self contained unit - runs independently
- Preview/program tally information from small LED
- Set camera number via selector switch (cam 1-12)
- Program tally from 3-pin phoenix connector: Ground, IO, 12V (VIN)
- Iris lens calibration feature, if default iris values do not provide sufficient range

Model	Options	Color	Standard Price (MSRP)
1 x SDI-B4 Link		Blue	\$ 599
2 x SDI-B4 Link			\$ 1.099
3 x SDI-B4 Link			\$ 1.499
4 x SDI-B4 Link			\$ 1.999

WIFI-B4 Link



Connections	3G SDI IN/OUT + Hirose 12-pin connector + GPI Output + WiFi
Power Requirement	12V External power supply
Weight	175 g
What's Included	WIFI-B4 Link + PSU
Physical Specifications	9.5 x 7.5 x 3 cm (enclosure size)

- Receives control signals via WiFi or incoming SDI
- CCU control BMD Cameras wirelessly (WiFi)
- Control iris value on analog B4 lens
- Hirose 12-pin connector
- Built in WiFi client
- Preview/program tally information from small LED
- Set camera number via selector switch
- Program tally from 3-pin phoenix connector: Ground, IO, 12V (VIN)
- Iris lens calibration feature, if default iris values do not provide sufficient range
-
- Needs UniSketch OS based controller as base station

Model	Options	Color	Standard Price (MSRP)
WIFI-B4 Link	-	Blue	\$ 699

SDI-GPI Link



Option: GPI

Connections	Ethernet + DB25 connector + 3G SDI IN/OUT
Power Requirement	12V External power supply
Weight	315 g
What's Included	SDI-GPI Link + PSU + network cable + programming cable
Physical Specifications	12.7 x 8 x 4.9 cm (enclosure size)

- Embed red/green tally information on SDI signals from GPI inputs
- 16 digital inputs
- Select camera IDs in web interface
- Only overrides Tally information
- Option: GPI. 2x8 channel DB-25 connector for GPI and GPO
- UniSketch OS based controller

Model	Options	Color	Standard Price (MSRP)
SDI-GPI Link	-	Blue	\$ 699
SDI-GPI Link + GPI Option	GPI		\$ 1,049

AEM Proxy

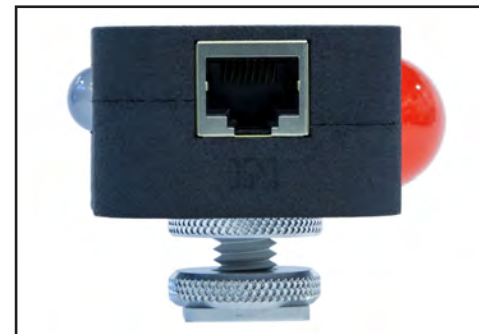


Connections	Ethernet for direct connection or via network.
Power Requirement	5V External power supply
Weight	110g
What's Included	AEM Proxy + PSU
Physical Specifications	9.3 x 6 x 3.1 cm (enclosure size)

- Gateway for "unlimited" number of clients

Model	Options	Color	Standard Price (MSRP)
AEM Proxy	-	Black	\$ 499

Tally Box



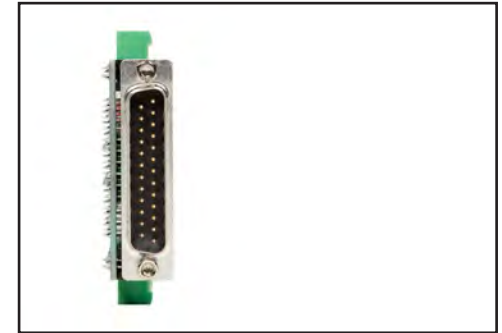
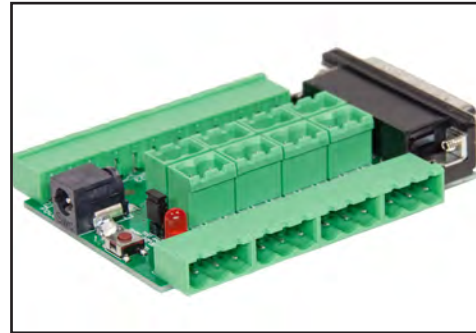
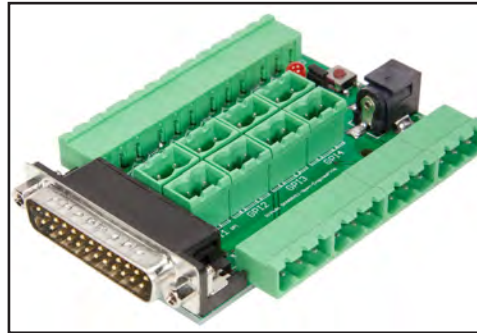
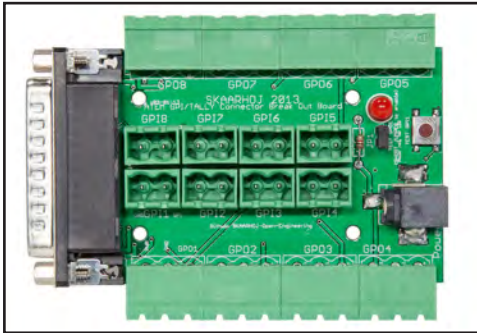
Connections	Ethernet for direct connection or via network.
Power Requirement	12V External power supply
Weight	Tally Box: 350 g Tally Light: 60 g
What's Included	Tally Box + PSU + network cable + programming cable
Physical Specifications	Tally Box 16.7 x 8 x 2.9 cm (enclosure size) Tally Light 5.5 x 4.4 x 2.6 cm (enclosure size)

- Supports up to 8 Tally Lights
- Preview + Program Tally
- Daisy chain connection
- Star connection
- On/off main LED
- Dim option for operator LED
- UniSketch OS based controller
- For systems with 7 tally lights or more, contact us to get a quote

Model	Options	Color	Standard Price (MSRP)
Tally Box, 8 Channels		Blue	\$ 699
Tally Light		Black	\$ 249
Packages:			
Tally Box + 2 Tally Lights			\$ 1.149
Tally Box + 3 Tally Lights			\$ 1.349
Tally Box + 4 Tally Lights			\$ 1.549
Tally Box + 5 Tally Lights			\$ 1.749
Tally Box + 6 Tally Lights			\$ 1.949

Accessories

ATEM GPI & Tally Interface Breakout Board



Connections	DB25 connector
Power Requirement	
Weight	36 g
What's Included	Breakout Board
Physical Specifications	8.6 x 5.3 cm

- Designed to work with BlackMagic Design GPI/Tally Box
- Works perfect with SKAARHOJ ETH-GPI Link models
- Sturdy Phoenix Connectors for both inputs and outputs
- DC Plug (2.1x5.5, BMD compatible) for external power routed to to GPO connectors
- Test LED for GPO1 (jumper activated)
- Test button for GPI1

Model	Options	Color	Standard Price (MSRP)
ATEM GPI & Tally Interface Breakout Board			\$ 259

About SKAARHOJ

SKAARHOJ is owned and enthusiastically operated by Bjørn Thorup, Georgi Yankov and Kasper Skårhøj out of the Copenhagen area in the Kingdom of Denmark. Our charming country has a prince and a princess, green pastures, blond girls, some 16+ million slaughterpigs and now also universal broadcast controllers, thanks to us! We are pretty new in this hardware business, but backed by a long tradition for quality and dedication through Kaspers excellent career in the international open source community (being the founder of web CMS TYPO3). Together we and our fantastic employees are a strong team bringing radically customized control solutions to the broadcast market.

Return Policy:

Unfortunately we can't offer you any right of returning the assembled designs. We will always quality check the products before they leave our production line and at this time they will conform to the functionality described on the website and demonstrated in videos as well as any individual agreements we have made. We believe this policy is a fair consequence of the fact, that every unit that leaves us is essentially tailor made for you.

We offer a 1-year warranty on the hardware kits and service work we sell. This relates to the functional state of the assembled design when shipped.

Generally the designs announced on this site - be it hardware or software - is based on open source and "distributed in the hope that it will be useful, but WITHOUT ANY WARRANTY; without even the implied warranty of MERCHANTABILITY or FITNESS FOR A PARTICULAR PURPOSE" - as it is stated in the well known GNU/GPL license.

The ATEM Protocol Disclaimer:

In particular we can't guarantee for any change outside of our direct control and an example of that could be if Blackmagic Design decided to obfuscate their ATEM protocol so that the Arduino ATEM Library is rendered useless. There is no guarantee that this won't happen some day and therefore no products are sold as ATEM-compatible, rather this is given as a typical application, which by experience is known to be valid in the past and present. So to summarise: None of our ATEM compatible products are officially supported or endorsed by BlackMagic Design - yet! But so far they work with all known firmwares (last checked January 2018).

VIDEOLINK™
INC.

Phone: 416-690-1690 or 1-800-567-8481

Email: info@videolink.ca

Website: www.videolink.ca